

## HIGHLIGHTS OF PRESCRIBING INFORMATION

These highlights do not include all the information needed to use AZEDRA safely and effectively. See full prescribing information for AZEDRA.

**AZEDRA® (iobenguane I 131) injection, for intravenous use**  
**Initial U.S. Approval: 2018**

### INDICATIONS AND USAGE

AZEDRA is a radioactive therapeutic agent indicated for the treatment of adult and pediatric patients 12 years and older with iobenguane scan positive, unresectable, locally advanced or metastatic pheochromocytoma or paraganglioma who require systemic anticancer therapy. (1)

### DOSAGE AND ADMINISTRATION

- Verify pregnancy status in females of reproductive potential prior to administering AZEDRA. (2.1)
- Block thyroid prior to administering AZEDRA. (2.2)
- Do not administer if platelet count is less than 80,000/mcL or absolute neutrophil count is less than 1,200/mcL. (2.4)
- Administer AZEDRA intravenously as a dosimetric dose followed by two therapeutic doses administered 90 days apart. (2.2)
- The recommended dosimetric dose is:
  - Patients greater than 50 kg: 185 to 222 MBq (5 to 6 mCi)
  - Patients 50 kg or less: 3.7 MBq/kg (0.1 mCi/kg)
- The recommended therapeutic dose for each of the 2 doses is:
  - Patients greater than 62.5 kg: 18,500 MBq (500 mCi)
  - Patients 62.5 kg or less: 296 MBq/kg (8 mCi/kg)
- Adjust AZEDRA therapeutic doses based on radiation dose estimates results from dosimetry, if needed. (2.2)

### DOSAGE FORMS AND STRENGTHS

Injection: 555 MBq/mL (15 mCi/mL) at TOC as a clear solution in a single-dose vial. (3)

### CONTRAINDICATIONS

None.

### WARNINGS AND PRECAUTIONS

- Risk from Radiation Exposure: Minimize radiation exposure consistent with institutional radiation safety practices and patient management procedures. (2.1), (5.1)

- Myelosuppression: Monitor blood cell counts. Withhold and dose reduce AZEDRA as recommended based on severity of cytopenia. (5.2)
- Secondary Myelodysplastic Syndrome, Leukemia and Other Malignancies: The time to development of MDS or acute leukemia ranged from 12 months to 7 years. (5.3)
- Hypothyroidism: Initiate thyroid-blocking medication prior to administration and continue after each dose. Monitor for hypothyroidism and thyroid-stimulating hormone levels before starting AZEDRA and annually thereafter. (2.3, 5.4)
- Elevations in blood pressure: Monitor blood pressure frequently during the first 24 hours after each therapeutic dose. (5.5)
- Renal Toxicity: Monitor renal function during and after treatment. (5.6)
- Pneumonitis: Monitor patients for signs and symptoms of pneumonitis and treat appropriately. (5.7)
- Embryo-Fetal Toxicity: Can cause fetal harm. Advise females and males of reproductive potential of the potential risk to a fetus and to use effective contraception. (5.8)
- Risk of Infertility: May cause infertility. (5.9)

### ADVERSE REACTIONS

The most common Grade 3-4 adverse reactions ( $\geq 10\%$ ) were lymphopenia, neutropenia, thrombocytopenia, fatigue, anemia, increased international normalized ratio, nausea, dizziness, hypertension, and vomiting. (6.1)

**To report SUSPECTED ADVERSE REACTIONS, contact Progenics Pharmaceuticals, Inc. at 1-800-362-2668 or FDA at 1-800-FDA-1088 or [www.fda.gov/medwatch](http://www.fda.gov/medwatch).**

### DRUG INTERACTIONS

- Drugs that Reduce Catecholamine Uptake or Deplete Stores: Discontinue these drugs prior to and following AZEDRA administration. (2.3), (7.1)

### USE IN SPECIFIC POPULATIONS

- Lactation: Advise women not to breastfeed. (8.2)

### See 17 for PATIENT COUNSELING INFORMATION

Revised: 3/2021

## FULL PRESCRIBING INFORMATION: CONTENTS\*

### 1 INDICATIONS AND USAGE

### 2 DOSAGE AND ADMINISTRATION

- 2.1 Important Safety Information
- 2.2 Recommended Dosage
- 2.3 Thyroid Blockade and Other Pre- and Concomitant Medications
- 2.4 Dose Modifications for Adverse Reactions
- 2.5 Preparation and Administration
- 2.6 Radiation Dosimetry

### 3 DOSAGE FORMS AND STRENGTHS

### 4 CONTRAINDICATIONS

### 5 WARNINGS AND PRECAUTIONS

- 5.1 Risk from Radiation Exposure
- 5.2 Myelosuppression
- 5.3 Secondary Myelodysplastic Syndrome, Leukemia and Other Malignancies
- 5.4 Hypothyroidism
- 5.5 Elevations in Blood Pressure
- 5.6 Renal Toxicity
- 5.7 Pneumonitis
- 5.8 Embryo-Fetal Toxicity
- 5.9 Risk of Infertility

### 6 ADVERSE REACTIONS

#### 6.1 Clinical Trials Experience

### 7 DRUG INTERACTIONS

- 7.1 Drugs that Reduce Catecholamine Uptake or Deplete Stores

### 8 USE IN SPECIFIC POPULATIONS

- 8.1 Pregnancy
- 8.2 Lactation
- 8.3 Females and Males of Reproductive Potential
- 8.4 Pediatric Use
- 8.5 Geriatric Use
- 8.6 Renal Impairment

### 11 DESCRIPTION

- 11.1 Physical Characteristics
- 11.2 External Radiation

### 12 CLINICAL PHARMACOLOGY

- 12.1 Mechanism of Action
- 12.2 Pharmacodynamics
- 12.3 Pharmacokinetics

### 13 NONCLINICAL TOXICOLOGY

- 13.1 Carcinogenesis, Mutagenesis, Impairment of Fertility

### 14 CLINICAL STUDIES

### 16 HOW SUPPLIED/STORAGE AND HANDLING

### 17 PATIENT COUNSELING INFORMATION

\*Sections or subsections omitted from the full prescribing information are not listed.

## FULL PRESCRIBING INFORMATION

### 1 INDICATIONS AND USAGE

AZEDRA is indicated for the treatment of adult and pediatric patients 12 years and older with iobenguane scan positive, unresectable, locally advanced or metastatic pheochromocytoma or paraganglioma who require systemic anticancer therapy.

### 2 DOSAGE AND ADMINISTRATION

#### 2.1 Important Safety Information

AZEDRA is a radiopharmaceutical. Handle with appropriate safety measures to minimize radiation exposure [see *Warnings and Precautions* (5.1)]. Use waterproof gloves and effective radiation shielding when handling AZEDRA. Radiopharmaceuticals, including AZEDRA, should be used by or under the control of physicians who are qualified by specific training and experience in the safe use and handling of radiopharmaceuticals, and whose experience and training have been approved by the appropriate governmental agency authorized to license the use of radiopharmaceuticals.

Verify pregnancy status in females of reproductive potential prior to initiating AZEDRA [see *Use in Specific Populations* (8.1), (8.3)].

#### 2.2 Recommended Dosage

Administer thyroid blockade and other pre- and concomitant medications as recommended [see *Dosage and Administration* (2.3)].

#### Dosimetric Dose

The recommended AZEDRA dosimetric dose administered as an intravenous injection is:

- Patients weighing greater than 50 kg: 185 to 222 MBq (5 or 6 mCi)
- Patients weighing 50 kg or less: 3.7 MBq/kg (0.1 mCi/kg)

#### Dosimetry and Biodistribution Assessment

Following the AZEDRA dosimetric dose:

- Acquire anterior/posterior whole body gamma camera images within 1 hour of the AZEDRA dosimetric dose and prior to patient voiding (Day 0; Scan 1).
- Acquire additional images on Day 1 or 2 following patient voiding (Scan 2).
- Acquire additional images between Days 2-5 following patient voiding (Scan 3).

For each individual patient, calculate the radiation dose estimates to normal organs and tissues per unit activity [D (organ)] of administered dose using data extracted from these 3 images. Calculate in accordance with the Medical Internal Radiation Dose (MIRD) schema or related methodology. Whenever possible, use patient-specific organ masses (e.g., estimated from imaging).

#### Therapeutic Dosage

The recommended AZEDRA therapeutic dose is based on body weight and reduced, if necessary, based on the dosimetry data. Administer a total of 2 therapeutic doses intravenously a minimum of 90 days apart.

#### *Weight Based Dose per Therapeutic Cycle*

- Patients weighing greater than 62.5 kg: 18,500 MBq (500 mCi)
- Patients weighing 62.5 kg or less: 296 MBq/kg (8 mCi/kg)

*Determine if Dose Reduction Needed Based on Critical Organ Limits*

- Calculate the estimated critical organ absorbed-dose by multiplying the dosimetry-derived radiation absorbed-dose per unit activity [D (organ)] by weight based therapeutic total activity (Aw).
- If resulting estimated critical organ absorbed-dose is less than threshold absorbed-dose (T) shown in Table 1, no dose adjustment is necessary.
- If resulting estimated critical organ absorbed-dose exceeds threshold absorbed-dose (T) shown in Table 1, calculate the reduced therapeutic total activity (i.e., the cumulative activity that would be administered in 2 therapeutic cycles) using the following equation:

$$\text{Reduced Therapeutic Total Activity} = A_w \times [T \div \{A_w \times D (\text{organ})\}]$$

- Example: A 75 kg patient qualifies for a therapeutic total activity of 1000 mCi (Aw). For the kidneys, the dosimetry yields an estimated critical organ absorbed dose per unit activity of 0.027 Gy/mCi [D (kidney)]. Thus, the estimated critical organ absorbed-dose to the kidney is 27 Gy [Aw x D (organ)], which exceeds the threshold absorbed-dose for the kidneys (T) of 18 Gy (Table 1). Using the equation above the reduced therapeutic total activity to be administered to this patient is 666.7 mCi.

$$1000 \text{ mCi} \times [18 \text{ Gy} \div \{1000 \text{ mCi} \times 0.027 \text{ Gy/mCi} \}]$$

**Table 1: Absorbed-dose Threshold Values for Radiation Toxicity in Critical Organs**

Organ	~1%-rate: mortality or organ failure associated with disease	Time to death or organ failure	Threshold* absorbed-dose for ~1%-rate mortality or organ failure (Gy)
Red marrow	H-ARS mortality	1-2 months	12
Lungs	Pneumonitis mortality	1-7 months	16.5
Kidneys	Renal failure	>1 year	18
Liver	Hepatomegaly, ascites: possible organ failure	0.5-3 months	31
Small intestine	GI-ARS mortality	6-9 days	40

\*Threshold of ~0.5 Gy for both heart and carotid artery, derived from experience with external-beam radiotherapy and associated with fractionated exposure, has also been proposed to support an ~1% mortality rate of cardiovascular and cerebrovascular deaths in >10-15 years; however, uncertainty is associated with the value ~ 0.5 Gy cited for vascular disease (ICRP publication 118, p.300, Table 4.5). Consider benefits/risks to patients.

**2.3 Thyroid Blockade and Other Pre- and Concomitant Medications**

Thyroid Blockade

Administer inorganic iodine starting at least 24 hours before and continuing for 10 days after each AZEDRA dose [see Warnings and Precautions (5.4)].

Hydration

Instruct patients to increase fluid intake to at least two liters a day starting at least 1 day before and continuing for 1 week after each AZEDRA dose to minimize irradiation to the bladder [see Warnings and Precautions (5.1)].

Drugs that Reduce Catecholamine Uptake or Deplete Stores

Discontinue drugs that reduce catecholamine uptake or deplete catecholamine stores for at least 5 half-lives before administration of either the dosimetry dose or a therapeutic dose of AZEDRA. Do not administer these drugs until at least 7 days after each AZEDRA dose [see Drug Interactions (7.1)].

Antiemetic

Administer antiemetics 30 minutes prior to administering each AZEDRA dose.

## 2.4 Dose Modifications for Adverse Reactions

Recommended dose modifications of AZEDRA for adverse reactions are provided in Table 2 and the recommended dose or dose reduction for the second therapeutic dose of AZEDRA for myelosuppression are provided in Table 3.

**Table 2: Recommended Dose Modifications of AZEDRA for Adverse Reactions**

Adverse Reaction	Dose Modification
Myelosuppression [see Warnings and Precautions (5.2)]	Do not administer the first therapeutic dose for platelet counts less than 80,000/mcL or absolute neutrophil counts (ANC) less than 1,200/mcL. Do not administer the second therapeutic dose until platelets and neutrophils return to baseline or to the normal range. Reduce the second therapeutic dose for the following: <ul style="list-style-type: none"> <li>• platelet count less than 25,000/mcL, ANC less than 500/mcL, or life-threatening anemia for more than 7 days</li> <li>• febrile neutropenia</li> <li>• platelet count less than 50,000/mcL with active bleeding</li> </ul>
Pneumonitis [see Warnings and Precautions (5.7)]	Do not administer the second therapeutic dose if pneumonitis is diagnosed after the first therapeutic dose.

**Table 3: Recommended Dose or Dose Reduction for Second Therapeutic Dose of AZEDRA for Myelosuppression**

Patient Population	If first therapeutic dose was weight based,	If first therapeutic dose was reduced based on critical organ limits,
Patients weighing greater than 62.5 kg	Reduce the second therapeutic dose to 425 mCi	Reduce second therapeutic dose to 85% of the first dose
Patients weighing 62.5 kg or less	Reduce the second therapeutic dose to 7 mCi/kg	Reduce second therapeutic dose to 85% of the first dose

## 2.5 Preparation and Administration

- Refer to the Package Handling Instructions supplied with the frozen vial. Discard if the temperature recording device displays an alarm icon indicating that the temperature exceeded -70°C during shipment.
- Use aseptic technique and radiation shielding when administering the AZEDRA solution. Use tongs when handling vial to minimize radiation exposure.
- Confirm the amount of radioactivity of AZEDRA in the radiopharmaceutical vial with an appropriate dose calibrator prior to and after AZEDRA administration.
- Inspect visually for particulate matter and discoloration prior to administration whenever solution and container permit. The AZEDRA solution should be a clear, colorless to pale yellow solution without any particulate matter. Discard if particulate matter or discoloration is observed.

### Dosimetric Dose Preparation

- Thaw the vial to room temperature in lead pot. Do not heat or refreeze. Confirm complete thawing and gently swirl to ensure homogeneity.

- Insert a venting unit (consisting of a needle, 0.2-micron sterile filter, and a charcoal filter) to avoid pressurizing the contents of the vial during dilution. Swirl gently to ensure homogeneity.
- Add sufficient volume of 0.9% Sodium Chloride Solution, USP to the vial to yield a concentration of 1 mCi/mL (37 MBq/mL). Swirl gently to ensure homogeneity.
- Draw the dosimetric dose into a 10 mL shielded syringe and place in the dose calibrator to ensure that the activity is within  $\pm 10\%$  of dose. Discard unused medicinal product or waste material in accordance with local and federal laws.
- Maintain at room temperature and administer within 8 hours of retrieval from frozen storage.

#### Dosimetric Dose Administration

- Administer the dosimetric dose over 60 seconds.

#### Therapeutic Dose Preparation

- Thaw the appropriate number of vials (2 or 3) to room temperature in lead pots. Do not heat or refreeze.
- Swirl each AZEDRA vial to ensure homogeneity.
- Insert a venting unit into each AZEDRA vial to avoid pressurizing the contents of the vial during dilution.
- Insert a venting unit into a sterile 50-mL glass vial. Transfer the entire contents of the two therapeutic vials into a 50-mL glass vial. Measure the radioactivity.
  - If radioactivity in the 50-mL glass vial exceeds the therapeutic dose, withdraw and discard the appropriate volume using a shielded syringe. Add 0.9% Sodium Chloride Solution, USP to a total volume of 50 mL.
  - If radioactivity in the 50-mL glass vial is less than the therapeutic dose, use a shielded syringe to withdraw the appropriate volume from a third AZEDRA vial and add to the 50-mL glass vial. Add 0.9% Sodium Chloride Solution, USP to a total volume of 50 mL.
- Swirl gently to ensure homogeneity.
- Remove the venting unit and place the 50-mL glass vial into a dose calibrator to ensure that the activity is within  $\pm 10\%$  of therapeutic dose.
- Maintain at room temperature and administer within 8 hours of retrieval from frozen storage.
- Discard unused medicinal product or waste material in accordance with local and federal laws.

#### Therapeutic Dose Administration

- Verify line patency by infusing 250 mL of 0.9% Sodium Chloride Solution, USP (primary intravenous line) at recommended rate of 200 mL/hour.
- Insert a venting unit into the 50-mL glass vial containing the AZEDRA therapeutic dose.
- Assemble a second intravenous line using a 19 Gauge x 5-inch aspirating needle, 24-inch M-M arterial pressure tubing and a primary set specific connector.
- Clamp the second intravenous line and connect it to the primary intravenous line using the primary set specific connector. Flush the second intravenous line by releasing the clamp and then re-clamp the second intravenous line.
- Insert the needle of the second intravenous line into the 50-mL glass vial containing the AZEDRA therapeutic dose. Ensure the needle reaches the bottom of the glass vial without touching the sides of the vial.

- Clamp the primary intravenous line just above the second intravenous line and remove the clamp from the secondary intravenous line.
- Administer the AZEDRA therapeutic dose over 30 minutes at a recommended rate of 100 mL/hour for adults; for pediatric patients 12 years and older administer over 60 minutes at a recommended rate of 50 mL/hr. Clamp the secondary intravenous line when the first air bubbles form.
- Remove the clamp from the primary intravenous line to flush any residual AZEDRA therapeutic dose within this intravenous line with at least 50 mL of 0.9% Sodium Chloride Solution, USP.
- Remove the clamp from the secondary intravenous line to flush any residual drug in the secondary intravenous line into the 50-mL glass vial.

## 2.6 Radiation Dosimetry

The mean of the estimated radiation absorbed doses for AZEDRA are shown in Table 4.

**Table 4: Radiation Absorbed Dose Estimates\* by Target Organ Following Intravenous Administration of ~5 mCi AZEDRA**

Target Organ	Mean (mGy/MBq)	Minimum (mGy/MBq)	Maximum (mGy/MBq)	Standard Deviation (mGy/MBq)
Salivary Glands	1.499	0.486	7.957	1.134
LLI Wall <sup>1</sup>	1.184	0.093	2.770	0.356
Thyroid	0.779	0.071	11.000	1.409
Urinary Bladder Wall	0.614	0.141	0.930	0.142
ULI Wall <sup>2</sup>	0.514	0.091	1.120	0.138
Liver	0.509	0.180	7.830	0.862
Kidneys	0.360	0.085	0.772	0.163
Spleen	0.343	0.091	4.470	0.495
Lungs	0.323	0.123	3.170	0.344
Heart Wall	0.272	0.073	1.550	0.215
Small Intestine	0.194	0.085	0.347	0.042
Osteogenic Cells	0.151	0.085	0.369	0.044
Gallbladder Wall	0.146	0.083	0.852	0.094
Ovaries	0.126	0.000	0.271	0.046
Pancreas	0.117	0.068	0.484	0.054
Adrenals	0.116	0.067	0.535	0.059
Uterus	0.112	0.000	0.247	0.041
Stomach Wall	0.100	0.059	0.279	0.033
Thymus	0.083	0.049	0.212	0.027
Muscle	0.082	0.049	0.188	0.024
Red Marrow	0.079	0.048	0.175	0.022
Breasts	0.070	0.040	0.189	0.024
Skin	0.063	0.036	0.153	0.018
Testes	0.061	0.000	0.183	0.036
Brain	0.057	0.022	0.213	0.028
Total Body	0.107	0.064	0.414	0.045

\* Table 1 tends to yield underestimates of absorbed dose for patients weighing less than 65 kg, and tends to yield overestimates for patients weighing more than 65 kg.

<sup>1</sup>-LLI Wall- Lower Large Intestine Wall.

<sup>2</sup>ULI Wall- Upper Large Intestine Wall.

### **3 DOSAGE FORMS AND STRENGTHS**

Injection: 555 MBq/mL (15 mCi/mL) as a clear, colorless to pale yellow solution in a single-dose vial.

### **4 CONTRAINDICATIONS**

None.

### **5 WARNINGS AND PRECAUTIONS**

#### **5.1 Risk from Radiation Exposure**

AZEDRA contributes to a patient's overall long-term radiation exposure. Long-term cumulative radiation exposure is associated with an increased risk for cancer. These risks of radiation associated with the use of AZEDRA are greater in pediatric patients than in adults [*see Use in Specific Populations (8.4)*].

Minimize radiation exposure to patients, medical personnel, and household contacts during and after treatment with AZEDRA consistent with institutional good radiation safety practices and patient management procedures [*see Dosage and Administration (2.1)*].

#### **5.2 Myelosuppression**

Severe and prolonged myelosuppression occurred during treatment with AZEDRA [*see Adverse Reactions (6.1)*]. Among the 88 patients who received a therapeutic dose of AZEDRA, 33% experienced Grade 4 thrombocytopenia, 16% experienced Grade 4 neutropenia, and 7% experienced Grade 4 anemia. Five percent of patients experienced febrile neutropenia. In Study IB12B following the first therapeutic dose, patients who experienced Grade 4 neutropenia reached neutrophil nadir at a median of 36 days (27 – 55 days) and remained at nadir for a median of 12 days (8 – 22 days) until recovery to less than or equal to Grade 3. Following the second dose, patients who experienced Grade 4 neutropenia reached nadir at a median of 43 days (38 – 47 days) and remained at nadir for a median of 18.5 days (8 – 31 days) until recovery to less than or equal to Grade 3.

Monitor blood cell counts weekly for up to 12 weeks or until levels return to baseline or the normal range. Withhold and dose reduce AZEDRA as recommended based on severity of the cytopenia [*see Dosage and Administration (2.4)*].

#### **5.3 Secondary Myelodysplastic Syndrome, Leukemia and Other Malignancies**

Myelodysplastic syndrome (MDS) or acute leukemias were reported in 6.8% of the 88 patients who received a therapeutic dose of AZEDRA [*see Adverse Reactions (6.1)*]. The time to development of MDS or acute leukemia ranged from 12 months to 7 years.

Two of the 88 patients developed a non-hematological malignancy. One patient developed colon cancer at 18 months and one patient developed lung adenocarcinoma at 27 months following the first therapeutic dose.

#### **5.4 Hypothyroidism**

Hypothyroidism was reported in 3.4% of the 88 patients who received a therapeutic dose of AZEDRA [*see Adverse Reactions (6.1)*]. The time to worsening of hypothyroidism was 4 months in one patient, and the time to development of hypothyroidism was less than one month in one patient and 18 months in one patient. Initiate thyroid-blocking medications starting at least 1 day before and continuing for 10 days after each AZEDRA dose to reduce the risk of hypothyroidism or thyroid neoplasia [*see Dosage and Administration (2.3)*]. Evaluate for clinical evidence of hypothyroidism and measure thyroid-stimulating hormone (TSH) levels prior to initiating AZEDRA and annually thereafter.

#### **5.5 Elevations in Blood Pressure**

Eleven percent of the 88 patients who received a therapeutic dose of AZEDRA [*see Adverse Reactions (6.1)*] experienced a worsening of pre-existing hypertension defined as an increase in systolic blood pressure to  $\geq 160$  mmHg with an increase of 20 mmHg or an increase in diastolic blood pressure to  $\geq 100$  mmHg with an increase of 10 mmHg. All changes in blood pressure occurred within the first 24 hours post infusion. Monitor blood pressure frequently during the first 24 hours after each therapeutic dose of AZEDRA.

## 5.6 Renal Toxicity

Of the 88 patients who received a therapeutic dose of AZEDRA [see *Adverse Reactions (6.1)*], 7% developed renal failure or acute kidney injury and 22% demonstrated a clinically significant decrease in glomerular filtration rate (GFR) measured at 6 or 12 months. Monitor renal function during and after treatment with AZEDRA. Patients with baseline renal impairment may be at greater risk of toxicity; perform more frequent assessments of renal function in patients with mild or moderate impairment. AZEDRA has not been studied in patients with severe renal impairment (creatinine clearance <30 mL/min).

## 5.7 Pneumonitis

Fatal pneumonitis occurred 9 weeks after a single dose in one patient in the expanded access program for Study IB12B (n=11). Pneumonitis was not diagnosed among the 88 patients enrolled in Study IB12 or IB12B [see *Adverse Reactions (6.1)*]. Monitor patients for signs and symptoms of pneumonitis and treat appropriately.

## 5.8 Embryo-Fetal Toxicity

Based on its mechanism of action, AZEDRA can cause fetal harm. There are no available data on the use of AZEDRA in pregnant women. No animal studies using iobenguane I 131 have been conducted to evaluate its effect on female reproduction and embryo-fetal development; however, all radiopharmaceuticals, including AZEDRA, have the potential to cause fetal harm.

Verify pregnancy status in females of reproductive potential prior to initiating AZEDRA [see *Dosage and Administration (2.1)*].

Advise females and males of reproductive potential of the potential risk to a fetus. Advise females of reproductive potential to use effective contraception during treatment with AZEDRA and for 7 months after the final dose. Advise males with female partners of reproductive potential to use effective contraception during treatment and for 4 months after the final dose [see *Use in Specific Populations (8.1), (8.3)*].

## 5.9 Risk of Infertility

Radiation exposure associated with AZEDRA may cause infertility in males and females. The recommended cumulative dose of 37 GBq of AZEDRA results in a radiation absorbed dose to the testes and ovaries within the range where temporary or permanent infertility can be expected following external beam radiotherapy [see *Dosage and Administration (2.6), Use in Specific Populations (8.3)*].

## 6 ADVERSE REACTIONS

The following serious adverse reactions are described elsewhere in the labeling:

- Myelosuppression [see *Warnings and Precautions (5.2)*]
- Secondary Myelodysplastic Syndrome, Leukemia and Other Malignancies [see *Warnings and Precautions (5.3)*]
- Hypothyroidism [see *Warnings and Precautions (5.4)*]
- Elevations in Blood Pressure [see *Warnings and Precautions (5.5)*]
- Renal Toxicity [see *Warnings and Precautions (5.6)*]
- Pneumonitis [see *Warnings and Precautions (5.7)*]

### 6.1 Clinical Trials Experience

Because clinical trials are conducted under widely varying conditions, adverse reaction rates observed in the clinical trials of a drug cannot be directly compared to rates in the clinical trials of another drug and may not reflect the rates observed in practice.

The data in Warnings and Precautions reflect exposure to AZEDRA in 88 patients with iobenguane-scan positive recurrent or unresectable, locally advanced or metastatic pheochromocytoma or paraganglioma (PPGL) who received a therapeutic dose of AZEDRA in one of two clinical studies (IB12 or IB12B). The Warnings and Precautions also include data from 11 patients enrolled in an expanded access program for Study IB12B [see *Warnings and Precautions (5)*].



The safety data below was evaluated in two studies in patients with recurrent or unresectable, locally advanced or metastatic PPGL. Study IB12 was an open-label, multi-center, single-arm dose-finding study in adult patients with malignant or recurrent PPGL. The study consisted of a 12-month efficacy phase with a 1 year follow-up. Twenty-one patients received a dosimetric dose (~5 mCi), followed by one therapeutic dose (~500 mCi) of AZEDRA. Study IB12B was an open-label, multi-center, single-arm study in 68 adult and pediatric patients age 12 years and older with recurrent or unresectable, locally advanced or metastatic PPGL [see *Clinical Studies (14)*].

Patients with evidence of liver dysfunction (aspartate aminotransferase or alanine aminotransferase  $\geq 2.5$  times the upper limit of normal or total bilirubin  $> 1.5$  times the upper limit of normal), a history of liver disease (including hepatitis and chronic alcohol abuse), or severe renal impairment (creatinine clearance  $< 30$  mL/min) were excluded. Patients who had received external beam radiation to  $> 25\%$  of bone marrow, received whole body radiotherapy, or who had received any systemic radiotherapy resulting in myelosuppression within 3 months of study entry, were also excluded. The safety data described below are based on pooled safety data from studies IB12 and IB12B. A total of 88 patients received at least one therapeutic dose of AZEDRA and 50 patients received two therapeutic doses (one patient received treatment in both studies).

Adverse reactions from studies IB12 and IB12B are presented in Table 5. The most common severe (Grade 3-4) adverse reactions were lymphopenia (78%), neutropenia (59%), thrombocytopenia (50%), fatigue (26%), anemia (24%), increased international normalized ratio (18%), nausea (16%), dizziness (13%), hypertension (11%), and vomiting (10%). Twelve percent of patients discontinued treatment due to adverse reactions (thrombocytopenia, anemia, lymphopenia, nausea and vomiting, multiple hematologic adverse reactions).

**Table 5: Adverse Reactions Occurring in  $\geq 10\%$  of Patients with PPGL Receiving Therapeutic Dose of AZEDRA in Studies IB12B and IB12**

Adverse Reaction	All Grades <sup>a</sup> , (%)	Grades <sup>a</sup> 3 - 4, (%)
Hematologic <sup>b</sup>		
Lymphopenia	96	78
Anemia	93	24
Thrombocytopenia	91	50
Neutropenia	84	59
Gastrointestinal		
Nausea	78	16
Vomiting <sup>c</sup>	58	10
Dry mouth	48	2
Sialadenitis <sup>d</sup>	39	1
Diarrhea	25	3
Abdominal pain <sup>e</sup>	23	6
Constipation	19	7
Oropharyngeal pain	14	0
Dyspepsia	10	0
General		
Fatigue <sup>f</sup>	71	26
Pyrexia	14	2
Injection site pain	10	0
Hyperhidrosis	10	0
Alopecia	10	0
Infections		
Upper respiratory tract infection <sup>g</sup>	16	2
Urinary tract infection	11	1
Investigations <sup>b</sup>		
Increased international normalized ratio <sup>h</sup>	85	18
Increased blood alkaline phosphatase	53	5

<b>Adverse Reaction</b>	<b>All Grades<sup>a</sup>, (%)</b>	<b>Grades<sup>a</sup> 3 - 4, (%)</b>
Increased aspartate aminotransferase	50	2
Increased alanine aminotransferase	43	2
Metabolism and nutrition		
Decreased appetite	30	5
Dehydration	16	4
Decreased weight	16	1
Musculoskeletal and connective tissue disorders		
Back pain	17	2
Pain in extremity	15	0
Nervous system		
Dizziness <sup>i</sup>	34	13
Headache	32	6
Dysgeusia <sup>j</sup>	24	1
Respiratory, thoracic, and mediastinal disorders		
Cough	18	0
Dyspnea	18	7
Vascular		
Hypotension	24	4
Hypertension <sup>k</sup>	20	11
Tachycardia	10	3

<sup>a</sup> NCI CTCAE version 3.0.

<sup>b</sup> Based on laboratory data.

<sup>c</sup> Includes vomiting and retching.

<sup>d</sup> Includes sialoadenitis, salivary gland pain, and salivary gland enlargement.

<sup>e</sup> Includes abdominal pain, abdominal pain upper, and abdominal pain lower.

<sup>f</sup> Includes fatigue, asthenia.

<sup>g</sup> Includes upper respiratory tract infection, sinusitis, rhinorrhea, upper-airway cough syndrome, nasopharyngitis.

<sup>h</sup> Only assessed in Study IB12B (N=68).

<sup>i</sup> Includes dizziness and dizziness postural.

<sup>j</sup> Includes dysgeusia, hypogeusia and ageusia.

<sup>k</sup> Includes blood pressure increased and hypertension.

The following clinically significant adverse reactions were observed in < 10% of patients treated with AZEDRA:

*Cardiac:* palpitations (9%), syncope and presyncope (8%)

*Endocrine:* decreased TSH (5%), hypothyroidism (3%)

*Gastrointestinal:* dysphagia (7%), abdominal distension (6%), gastroesophageal reflux disease (6%), stomatitis (3%)

*General:* insomnia (9%), chills (8%), chest pain (6%)

*Infections:* candida infection (6%)

*Investigations:* prolonged prothrombin time (9%)

*Musculoskeletal and connective tissue:* arthralgia (8%), neck pain (8%), pain in jaw (7%), muscle spasms (6%)

*Renal and urinary disorders:* proteinuria (9%), renal failure (7%),

*Respiratory:* epistaxis (9%), nasal congestion (7%), pulmonary embolism (3%)

*Skin and subcutaneous tissue:* dry skin (8%), rash (8%), petechiae (7%)

*Vascular:* orthostatic hypotension (9%)

## 7 DRUG INTERACTIONS

### 7.1 Drugs that Reduce Catecholamine Uptake or Deplete Stores

Based on the mechanism of action of iobenguane, drugs that reduce catecholamine uptake or that deplete catecholamine stores may interfere with iobenguane uptake into cells and therefore interfere with dosimetry calculations or the efficacy of AZEDRA. These drugs were not permitted in clinical trials that assessed the safety and efficacy of AZEDRA. Discontinue drugs that reduce catecholamine uptake or deplete catecholamine stores, such as those listed below, for at least 5 half-lives before administration of either the dosimetry or a therapeutic dose of AZEDRA. Do not administer these drugs until at least 7 days after each AZEDRA dose [*see Dosage and Administration (2.3)*].

- CNS stimulants or amphetamines (e.g. cocaine, methylphenidate, dextroamphetamine)
- Norepinephrine and dopamine reuptake inhibitors (e.g. phentermine)
- Norepinephrine and serotonin reuptake inhibitors (e.g. tramadol)
- Monoamine oxidase inhibitors (e.g. phenelzine and linezolid)
- Central monoamine depleting drugs (e.g. reserpine)
- Non-select beta adrenergic blocking drugs (e.g. labetalol)
- Alpha agonists or alpha/beta agonists (e.g. pseudoephedrine, phenylephrine, ephedrine, phenylpropanolamine, naphazoline)
- Tricyclic antidepressants or norepinephrine reuptake inhibitors (e.g. amitriptyline, bupropion, duloxetine, mirtazapine, venlafaxine)
- Botanicals that may inhibit reuptake of norepinephrine, serotonin or dopamine (e.g. ephedra, ma huang, St John's Wort, yohimbine)

## 8 USE IN SPECIFIC POPULATIONS

### 8.1 Pregnancy

#### Risk Summary

Based on its mechanism of action, AZEDRA can cause fetal harm [*see Clinical Pharmacology (12.1)*]. There are no available data on AZEDRA use in pregnant women. No animal studies using iobenguane I 131 have been conducted to evaluate its effect on female reproduction and embryo-fetal development; however, all radiopharmaceuticals, including AZEDRA, have the potential to cause fetal harm. Advise pregnant women of the risk to a fetus.

In the U.S. general population, the estimated background risk of major birth defects and miscarriage in clinically recognized pregnancies is 2 to 4% and 15 to 20%, respectively.

### 8.2 Lactation

#### Risk Summary

There are no data on the presence of iobenguane I 131 in human milk or its effects on the breastfed infant or milk production. No lactation studies in animals were conducted. Because of the potential risk for serious adverse reactions in breastfed infants, advise women not to breastfeed during treatment with AZEDRA and for 80 days after the final dose.

### 8.3 Females and Males of Reproductive Potential

#### Pregnancy Testing

Verify pregnancy status in females of reproductive potential prior to initiating AZEDRA [*see Use in Specific Populations (8.1)*].

#### Contraception

AZEDRA can cause fetal harm when administered to a pregnant woman [*see Use in Specific Populations (8.1)*].

### *Females*

Advise women of reproductive potential to use effective contraception during treatment with AZEDRA and for 7 months following the final dose of AZEDRA.

### *Males*

Based on its mechanism of action, advise males with female partners of reproductive potential to use effective contraception during treatment with AZEDRA and for 4 months following the final dose of AZEDRA [see *Dosage and Administration* (2.6)].

### Infertility

The recommended cumulative dose of 37 GBq of AZEDRA results in a radiation absorbed dose to the testes and ovaries within the range where temporary or permanent infertility can be expected following external beam radiotherapy [see *Dosage and Administration* (2.6)].

## **8.4 Pediatric Use**

The safety and effectiveness of AZEDRA have been established in patients 12 years and older with unresectable and iobenguane scan positive, locally advanced or metastatic, pheochromocytoma and paraganglioma (PPGL) which require systemic anticancer therapy. Use of AZEDRA for this indication is supported by evidence from an adequate and well-controlled study in adults and pediatric patients 12 years and older [see *Adverse Reactions* (6.1), *Clinical Studies* (14)].

The risks of radiation associated with AZEDRA is greater in pediatric patients than that in adult patients due to greater absorbed radiation doses and longer life expectancy. Ensure the therapeutic benefit of AZEDRA outweighs these greater risks prior to administration in pediatric patients.

The safety and effectiveness of AZEDRA have not been established in pediatric patients younger than 12 years old with unresectable and iobenguane scan positive, locally advanced or metastatic PPGL which require systemic anticancer therapy.

## **8.5 Geriatric Use**

Of the patients enrolled in all clinical studies of AZEDRA, 17% were 65 years or older and 1% were 75 years or older. Clinical studies of AZEDRA did not include sufficient numbers of subjects aged 65 and over to determine whether they respond differently from younger subjects.

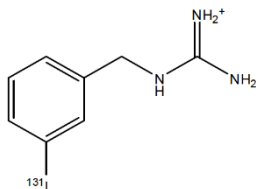
## **8.6 Renal Impairment**

The radiation dose to patients with renal impairment may be increased due to the delayed elimination of the drug [see *Clinical Pharmacology* (12)]. Adjust the therapeutic dose based on radiation exposure estimates from the dosimetry assessment [see *Dosage and Administration* (2.2), *Clinical Pharmacology* (12)]. The safety of AZEDRA in patients with severe renal impairment (CLCr < 30 mL/min) or end-stage renal disease has not been studied.

## **11 DESCRIPTION**

AZEDRA (iobenguane I 131) injection, for intravenous use, is a radioactive therapeutic agent. The drug substance iobenguane I 131 is a substituted benzylguanidine with I 131 in the meta position of the benzene ring.

Iobenguane I 131 is described as I 131 meta-iodobenzylguanidine. The molecular weight is 279.1 Daltons and the structural formula is as follows:



AZEDRA (iobenguane I 131) 555 MBq/mL (15 mCi/mL) injection is a sterile, clear, colorless to pale yellow solution. Each single-dose vial contains iobenguane (0.006 mg/mL), sodium ascorbate (58 mg/mL) and sodium gentisate (23 mg/mL) in Water for Injection, USP. The pH range of the solution is 4.5 to 5.5, with specific activity of ~2,500 mCi/mg (92,500 MBq/mg).

### 11.1 Physical Characteristics

I 131 decays with beta and gamma emissions with a physical half-life of 8.021 days. The principal beta emission has a mean energy of 191.6 keV, and the principal gamma emission has energy of 364.5 keV.

### 11.2 External Radiation

The specific gamma ray constant for I 131 is 2.2 R/mCi hour at 1 cm. A 2.55 cm thickness of Pb will attenuate the radiation emitted by a factor of about 1,000.

Table 6 summarizes radioactive decay properties of I 131.

**Table 6: Physical Decay Chart: Iodine I 131: Half-Life = 8.021 Days.**

Days	Fraction Remaining
0 <sup>a</sup>	1
1	0.917
2	0.841
3	0.772
4	0.708
5	0.649
6	0.595
7	0.546
8	0.501
9	0.459
10	0.421
11	0.387
12	0.355
13	0.325
14	0.298

<sup>a</sup>Calibration day.

## 12 CLINICAL PHARMACOLOGY

### 12.1 Mechanism of Action

AZEDRA is an I 131 labeled iobenguane. Iobenguane is similar in structure to the neurotransmitter norepinephrine (NE) and is subject to the same uptake and accumulation pathways as NE. Iobenguane is taken up by the NE transporter in adrenergic nerve terminals and accumulates in adrenergically innervated tissues, such as the heart, lungs, adrenal medulla, salivary glands, liver, and spleen as well as tumors of neural crest origin. Pheochromocytoma and paraganglioma (PPGL) are tumors of neural crest origin that express high levels of the NE transporter on their cell surfaces. Following intravenous administration, AZEDRA is taken up and accumulates within pheochromocytoma and paraganglioma cells, and radiation resulting from radioactive decay of I 131 causes cell death and tumor necrosis.

### 12.2 Pharmacodynamics

The effect of AZEDRA on the QTc interval was evaluated in 74 patients with unresectable pheochromocytoma or paraganglioma. At the recommended therapeutic dosage, no large mean increases from baseline in the QTc interval (i.e., >20 ms) were detected.

### 12.3 Pharmacokinetics

The pharmacokinetics (PK) of iobenguane I 131 following a dosimetric dose were characterized in patients with malignant PPGL and other malignancies. The mean blood area under curve (AUC) of iobenguane I 131 at the recommended dosimetric dose is  $1 \mu\text{Ci}\cdot\text{h}/\text{mL}$  (CV 33%). The mean maximum concentration ( $C_{\text{max}}$ ) for iobenguane I 131 is  $0.06 \mu\text{Ci}/\text{mL}$  (CV 36%), which generally occurred at the end of the AZEDRA infusion.

#### Distribution

The volume of distribution (mean  $\pm$  SD) of iobenguane I 131 is  $2893 \pm 592 \text{ mL}/\text{kg}$ . The blood levels of radioactivity declined with a distribution half-life (mean  $\pm$  SD) of  $0.37 \pm 0.22$  hours. The non-radioactive form of iobenguane I 131 is 61% to 63% bound to human plasma proteins.

#### Elimination

The mean clearance is  $62 \pm 24 \text{ mL}/\text{hr}/\text{kg}$  for iobenguane I 131 and the mean terminal blood half-life is  $35 \pm 14$  hours.

#### *Metabolism*

Iobenguane I 131 does not undergo hepatic metabolism.

#### *Excretion*

Iobenguane I 131 is primarily eliminated renally with cumulative excretion of  $50 \pm 10\%$  within 24 hours and  $80 \pm 10\%$  within 120 hours following AZEDRA administration. Unchanged I 131 accounted for an average of 94% and 93% radioactivity excreted in urine collected at 0-6 and 6-24 hours post-dose, respectively. Minor metabolites detected in some patients included free I 131, quantifiable in 55% of 11 patients in Study IB11, as well as meta-iodohippuric acid (MIHA) and meta-iodobenzyl bisguanidine (MMIBG) quantifiable in one patient each.

#### Specific Populations

Eight of 42 patients (19%) with mild or moderate renal impairment ( $\text{CL}_{\text{Cr}} \geq 30\text{-}89 \text{ mL}/\text{min}$  by Cockcroft-Gault) required therapeutic dose reductions based on radiation dose estimates to critical organs exceeding Emami limits (absorbed renal dose exceeding 23 Gy). The pharmacokinetics of iobenguane I 131 has not been studied in patients with severe renal impairment ( $\text{CL}_{\text{Cr}} < 30 \text{ mL}/\text{min}$ ) or end-stage renal disease [*see Use in Specific Populations (8.6)*].

#### Drug Interaction Studies

##### *In Vitro Studies*

The non-radioactive form of iobenguane does not inhibit CYP1A2, 2B6, 2C8, 2C9, 2C19, 2D6, or 3A. It does not induce CYP1A, 2B6, 2C9, 2C19, or 3A. It is not a substrate or inhibitor of P-glycoprotein.

## 13 NONCLINICAL TOXICOLOGY

### 13.1 Carcinogenesis, Mutagenesis, Impairment of Fertility

Carcinogenicity studies with iobenguane I 131 have not been conducted; however, radiation is a carcinogen and a mutagen. No animal studies were conducted to determine the effects of iobenguane I 131 on fertility.

## 14 CLINICAL STUDIES

The efficacy of AZEDRA in patients with iobenguane scan-positive, unresectable, locally advanced or metastatic pheochromocytoma or paraganglioma (PPGL) which require systemic anticancer therapy was established in Study IB12B, an open-label, single-arm, multicenter clinical trial (NCT00874614). Patients were at least 12 years of age and were ineligible for curative therapy. Patients also progressed on prior therapy for PPGL or were not candidates for chemotherapy. Other eligibility criteria required patients' tumors to have definitive iobenguane avidity; at least one tumor site identified by computed tomography (CT), magnetic resonance imaging (MRI), or iobenguane I 131 scan; Karnofsky performance status  $\geq 60$ ; absence of active central nervous system lesions, and no changes to their antihypertensive regimen in the 30 days prior to the first therapeutic dose.

The major efficacy outcome measure was the proportion of patients who experienced a 50% or greater reduction of all antihypertensive medication(s) lasting for at least six months (28 days per month). Overall tumor response measured by RECIST (Response Evaluation Criteria in Solid Tumors version 1.0) was also evaluated. After the final 12-month assessment, patients entered into long-term follow-up for up to 4 additional years.

A total of 74 patients received the dosimetric dose of AZEDRA. Following dosimetry, 68 patients received at least one therapeutic dose and 50 patients received two therapeutic doses administered at least 90 days apart. The dosimetric dose was 185 mBq to 222 MBq (5 mCi to 6 mCi) for patients weighing > 50 kg and 3.7 MBq/kg (0.1 mCi/kg) for patients weighing ≤ 50 kg. The therapeutic dose was 18,500 MBq (500 mCi) for patients weighing > 62.5 kg and 296 MBq/kg (8 mCi/kg) for patients weighing ≤ 62.5 kg. Among the 68 patients, the median age was 55 years (16 to 72 years), 57% were male, 75% were White, 21% were Black and 4% were Asian. For the primary tumor diagnosis, 78% had pheochromocytoma, 21% had paraganglioma, and 1% had both. Fifty percent (50%) of patients with evaluable imaging studies had lung or liver metastases and 61% had bone metastases at baseline. Eighty-eight percent (88%) underwent prior surgery, 50% received prior external radiation, 31% received prior I 131 MIBG, 31% received prior chemotherapy, 15% received prior kinase inhibitors and 4% received other prior systemic therapies. The median (range) of prior therapies per patient is 2 (0, 7).

The efficacy results are summarized in Table 7. All confirmed responses per RECIST were partial responses.

**Table 7: Efficacy Results in Patients with Pheochromocytoma or Paraganglioma in Study IB12B**

	<b>At least the first therapeutic dose N=68</b>
<b>Reduction of all antihypertensive medications by at least 50% maintained for at least 6 months, n (%)</b>	
Number of patients	17
Proportion of patients (95% CI <sup>a</sup> )	25% (16%, 37%)
<b>Best confirmed overall tumor response per RECIST</b>	
Number of patients	15
Overall response rate (95% CI <sup>b</sup> )	22% (14%, 33%)
% Responders with Duration of Response ≥ 6 months	53%

<sup>a</sup> Calculated using the Agresti-Coull method.

<sup>b</sup> Exact Confidence Interval.

## 16 HOW SUPPLIED/STORAGE AND HANDLING

AZEDRA injection, containing 555 MBq/mL (15 mCi/mL) of I-131 (as iobenguane I 131) and 0.006 mg/mL of iobenguane, is a sterile, clear, colorless to pale yellow solution for intravenous use supplied in a colorless Type 1 borosilicate glass 30 mL single-dose vial. AZEDRA is supplied in dosimetric (2 mL) and therapeutic (22.5 mL) presentations:

- Dosimetric: 1,110 MBq (30 mCi) of iobenguane I 131 at calibration time (NDC 71258-015-02).
- Therapeutic: 12,488 MBq (337.5 mCi) of iobenguane I 131 at calibration time (NDC 71258-015-22).

The product vial is in a lead shielded container placed in a re-sealable plastic bag. The product is shipped on dry ice in a USA DOT Type A Radioactive package.

Store at -70°C (-94°F).

The shelf life is 6 days post calibration time. Discard appropriately at 144 hours.

## 17 PATIENT COUNSELING INFORMATION

### Hydration

Advise patients to drink at least 2 liters of liquid a day before and for one week following each dose of AZEDRA to minimize irradiation of the bladder [see *Dosage and Administration* (2.3)].

### Radiation Risks

Advise patients to minimize radiation exposure to household contacts consistent with institutional good radiation safety practices and patient management procedures [see *Dosage and Administration (2.3)*, *Warnings and Precautions (5.1)*].

### Myelosuppression

Advise patients to contact their health care provider for any signs or symptoms of neutropenia, thrombocytopenia, or anemia [see *Warnings and Precautions (5.2)*].

### Secondary Myelodysplastic Syndrome, Leukemia and Other Malignancies

Advise patients of the potential for secondary cancers, including myelodysplastic syndrome, acute leukemia, and other malignancies [see *Warnings and Precautions (5.3)*].

### Hypothyroidism

Advise patients to take thyroid-blocking agents as prescribed. Advise patients of the need for life-long monitoring for hypothyroidism [see *Warnings and Precautions (5.4)*].

### Elevations in Blood Pressure

Advise patients to contact their health care provider for signs or symptoms that may occur following tumor-hormone catecholamines release and possible risk of increased blood pressure during or 24 hours following each therapeutic AZEDRA dose [see *Warnings and Precautions (5.5)*].

### Pneumonitis

Advise patients to contact their health care provider for signs or symptoms of pneumonitis [see *Warnings and Precautions (5.7)*].

### Drug Interactions

Advise patients that some medicines interact with AZEDRA and to contact their health care provider before starting any over the counter medicines or herbal or dietary supplements.

### Embryo-Fetal Toxicity

Advise pregnant women and males and females of reproductive potential of the potential risk to a fetus. Advise females to inform their health care provider of a known or suspected pregnancy [see *Warnings and Precautions (5.8)*, *Use in Specific Populations (8.1)*, *(8.3)*].

Advise females of reproductive potential to use effective contraception during treatment with AZEDRA and for 7 months after the final dose [see *Use in Specific Populations (8.1)*, *(8.3)*].

Advise male patients with female partners of reproductive potential to use effective contraception during treatment with AZEDRA and for 4 months after the final dose [see *Warnings and Precautions (5.8)*, *Use in Specific Populations (8.3)*].

### Lactation

Advise females not to breastfeed during treatment with AZEDRA and for 80 days after the final dose [see *Use in Specific Populations (8.2)*].

### Infertility

Advise females and males patients that AZEDRA may impair fertility [see *Warnings and Precautions (5.9)*, *Use in Specific Populations (8.3)*].



**Manufactured for:**

Progenics Pharmaceuticals, Inc.

One World Trade Center, 47th floor, Suite J

New York, NY 10007

AZEDRA<sup>®</sup> is a registered trademark of Progenics Pharmaceuticals, Inc.

516104-0221